

Nacca Typeface

ABC
DEFGHIJK
LMNOPQRST
UVWXYZ
ABCDEFGHIJK
LMNOPQRST
UVWXYZ
ABCDEFGHIJK
LMNOPQRST
UVWXYZ

Bold Underline Strikethrough

Accents

Superscripts 0¹²³⁴

Subscripts 5₆₇₈₉

Scientific Inferiors 12₃₄₅

ƒ £ Pts Rsd € Dp % N^o © ™ Tel

1/7 1/2 1/3 3/5 5/8 17/32 19/64 121/128

Ligatures: off fit fij ij fly office afflict

Discretionary Ligatures: The trick

shock satisfy Quip transforms

kunststoffflugzeug to plastic aircraft

Ordinals: 1st 2nd 3rd 4th 1^{eme} 3ⁱ

Default Figures: £12,345.678.90

Tabular Figures: £12,345.678.90

OldStyle Figures: £12,345.678.90

In Nova Fert animus quem mutatas dicere formas coeptis (nam vos et illas) adspirate meis origine mundi ad tempora carmen! {16}

Ante mare et terras et quod tegit omnia caelum unus erat tota naturae vultus in orbe, quem dixere chaos: rudis moles nec quicquam nisi pondus iners congestaque eodem non bene Quinctarum discordia semina. {12}

Nullus adhuc mundo praebebat lumina Titan. nec nova crescendo reparabat cornua Phoebe, nec circumsumsa pendebat in aere tellus ponderibus librata suis, nec brachia margine terrarum porrexerat. Amphitrite, utque erat et tellus illic et pontus et aer, sic erat instabilis tellus, innabilis unda, lucis egens aer; nulli sua forma manebat, obstabatque aliis aliud, quia corpore in uno frigida calidis, umentia siccis, mollia duris, sine pondere, habentia pondus. {10}

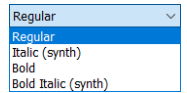
Hanc deus et melior litem natura diremit. Nam caelo terras et terris absceidit undas et liquidum spisso secrevit ab aere caelum. Quae postquam evoluit caecoque exemit acervo, dissociata locis concordiae pace ignea convexi vis et sine pondere caeli emicuit summaque locum sibi fecit in arce; proximus est illi levitate locoque; densior his tellus elementaque grandia traxit et pressa est gravitate sua; circumfluvius umor ultima possedit solidumque coercuit orbem. {9}

Sic ubi dispositam quisquis fuit ille deorum congeriem secuit sectamque in membra coegit principio terram, ne non aequalis ab omni parte foret, magni speciem glomeravit in orbis. {8}

Tum freta diffundi rapidisque tumescere ventis iussit et ambulae circumdare litora terrae addidit et fontes et stagna immensa lacusque fluminaque obliquis cecidit declivis ripis quae diversae locis partim sorbentur ab ipsa, mare partim campoque recepta liberioris aquae pro ripis litora pulsant. {6}

Ussit et ostendi campos, subsilire vultus fronde legi silvas, lapideas surgere montes, ulque ducere dextra caelum totidemque sinistrali parte secant, quae quinta rot cunctosque illasit omni inclusam numero distinxit ostem, cura dei, totidemque plagas tellus promittat. Quamquam quae molis, rot, non rot, huiusmodi, aetia, nec, tregit, ultra, ducit, totidem, inter, utrumque, locum, temperantique, debet, mox, cum, figure, flumina. {4}

Nacca is derived from Dancing Script by Pablo Impallar, a font released on Font Squirrel under the SIL font license.



Line spacing for 10 point text is 12 points. There are no italic type styles, so do not apply italic attributes, otherwise Windows will synthesise styles, which will bloat PDF files. All unsupported type styles are converted to curves on export and the text is no longer selectable.

Superscripts align with the tops of figures,¹ and scientific inferiors² bisect the baseline.³

¹ Use OpenType superscripts for figures and note references, for formulae such as $E=MC^2$ or $a^2+b^2=c^2$. There are lowercase alphabetical characters for Ordinals, but not a full alphabet.

² Scientific inferiors are designed for chemical formulae like H_2O .

³ Subscripts, (0123456789) which are used as denominators in fractions sit on or just below the baseline. Do not use `subscript` or `superscript` generated by PagePlus (or other applications) as they will probably be the wrong size and in the wrong position. If you do need alphabetical Superscripts or Subscripts use a slightly smaller font size (80%) together with character advance to get the desired effect. Then `anyt` glyphs can be used, and not just a-z.

The font includes a few Stylistic Alternates for capitals F, M, and U, an Initial Form for r, and final forms for many lowercase glyphs. There are also several standard ligatures for the letter pairs br, or, th, va, and wr, with subtle differences in the connecting strokes. Standard ligatures should be enabled by default.

Discretionary ligatures with swashes or more elaborate connecting strokes can be used for stylistic effect. The Quick brown fox skipped past the two atters. (The Quick brown fox skipped past the two atters).

25/12/2016 - Version 1.20