

Jivita Typeface

A B C
D E F G H
J K L M N O P Q R
S T U V W X Y Z A B C
D E F G H I J K L M N O P Q R
S T U V W X Y Z A B C D E F G
H I J K L M N O P Q R S T U V W X
Y Z A B C D E F G H I J K L M N O P Q R S
T U V W X Y Z A B C D E F G H I J K L M N O P Q
R S T U V W X Y Z A B C D E F G H I J K L M N O P Q R S ?

Bold Bold Italics

Regular Italics

PETITE CAPITALS & PETITE
CAPITALS FROM CAPITALS

Underline Strikeout

Àçcênts Symbols

» ~ * * * † Α Ψ Δ Υ Λ Ω Greek

α β γ δ ζ η κ λ

Super/sub 789 sinf H₂O

Ordinals: 1^e 2nd 3rd

£ € ₧ ₨ ₪ ₮ € ₹ € ¢ ₣ ₧ ₨ ₪ €

† ‡ † % † * † ? † ~ † 3/ Δ ≅ : † TELi FAX

(frac) 2/3 3/4 4/5 5/6 7/8 1/x a/b

223/71 otf/ttf

(afrc) 1/16 13/32 3/2 29/32 5/64 1 1/64 3 33/64

IV IX C D ii viii xi

(nalt) E N C I O S E D

(liga) fi fj ij fty ff fff ffl fb fh ffk?

(dlig) Quick aCt HE LA MB NK W W

(hlig) f AV ay w Wy Āăđš

(onum) £12345678.90

(pnum) £12345678.90

(default) £12345678.90

IN NOVA FERT animus
 mutatas dicere formas
 corpora; di, coeptis
 (nam vos mutastis et illas)
 adspirate meis primaque
 ab mea deducite tempora
 carmen! {16}

Ante mare et terras et quod
 tegit omnia caelum unus erat
 toto naturae vultus in orbe, quem
 dixere chaos: rudis quicquam nisi
 pondus iners congestaque eodem
 non bene iunctarum discordia
 semina rerum. {12}

NULLUS adhuc mundo praebebat
 lumina Titan, nec nova crescendo
 reparabat cornua Phoebæ, nec
 circumfuso pendeat in aere tellus
 ponderibus librata suis, nec brachia
 longo margine terrarum porrexerat
 Amphitrite; utque erat et tellus illic et
 pontus et aer, sic erat instabilis tellus,
 innabilis unda, lucis egens aer; nulli sua
 forma manebat, obstabatque aliud, quia
 corpore in uno frigida pugnabant calidis,
 umentia siccis, mollia duris, sine
 pondere, habentia pondus. {10}

Hanc deus et melior litem natura
 diremit. Nam caelo terras et terris
 abscidit undas et liquidum spisso
 secrevit ab aere caelum. In hac habitasse
 platea dictumst. Mauris rutrum enim vitæ
 mauris. Proin mattis eleifend pede. {9}

Sic ubi dispositam quisquis fuit ille deorum
 congeriem secuit sectamque in membra coegit,
 principio terram, ne non aequalis ab omni parte
 foret, magni speciem glomeravit in orbis. Vivamus
 vel sapien. Praesent nisl tortor, laoreet eu, dapibus
 quis, egestas non, mauris. Cum sociis natoque
 penatibus et magnis dis parturient montes,
 nascetur ridiculus mus. {8}

Tum freta diffundi rapidisque tumescere ventis iussit et ambitæ
 circumdare litora terræ; addidit et fontes et stagna inmensa
 lacusque fluminaque obliquis cinxit declivia ripis, quæ, diversa
 locis, partim sorbentur ab ipsa, in mare perveniunt partim campoque
 recepta liberioris aquæ pro ripis litora pulsant. {6}

Iussit et extendi campos, subsidere valles, fronde tegi silvas, lapidosos surgere montes, utque
 duæ dextra caelum totidemque sinistra parte secant zonæ, quinta est ardentior illis, sic unus
 inclusum numero distinctis eodem cura dei, totidemque plagæ tellure premuntur. Curabitur fells
 erit, tempus eu, placent et, pellentesque sed, purus. Sed sed diam. Nam nunc. Class aptent
 taciti sociosqu ad litura torquent per conubia nostra. {4}

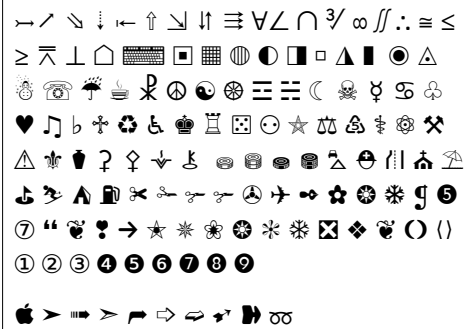
DECORATIVE DROP CAPITALS are colour glyphs. Colour fonts are not widely supported, but
 they can be tested in Firefox or Vividli. Let me know your results via the High-Logic
 forums in [this thread](#). To get similar results is not difficult in PagePlus by adding a highlight
 colour and converting the glyph to curves.

Jivita is a Sans Serif typeface designed for body text. The default line spacing for 10 point text is 13 points. The paragraphs below are set at 120% of pointsize, or 12 point for 10 point text.

A full range of Latin characters make it ideal for Pali, Sanskrit, Romanised Indic scripts, nearly all European languages, and Vietnamese.

A basic Greek character set, and a wide range of symbols extend its usefulness to other academic fields such as Maths and Science. Currency and maths symbols are designed on the figure width, while other symbols, arrows, and geometric shapes are a uniform width and align with the Caps height where the design permits.

Ordinals for lowercase: 1st, 2nd, 3rd, 1^{ème} 2^o, 3^u, 16^{ths} or Uppercase: 25TH. The font includes a full set of ligatures and a wide range of arrows, symbols and dingbats. A selection is below:



Chess: ♔ ♚ ♜ ♝ ♞ ♟ ♠ ♡ ♢ ♣

Character Variants



Character variants allow users to select a range of related symbols from the OpenType drop list on the Next Context toolbar in PagePlus or DrawPlus. Type the character listed above under cv0 and open the drop list to select cv2-5.