

# Version 9.1

Released 9th February 2016

[Download Page](#) • [Version Comparison Chart](#)

FontCreator 9.1 builds on Glyph Positioning (GPOS) support in OpenType Fonts added in version 8.0. GPOS kerning in modern fonts replaces the legacy KERN tables. GPOS is used in Arabic, Hebrew, and Asian fonts to position combining marks. It is also useful for case-sensitive forms and other features.

Web Designers can create their own fonts using the Web Open Font Format (WOFF) • [Test Page](#).

Export of CFF (Postscript) outlines is supported too.

Professional users who need high-end features (marked \*\*), and Home users, will appreciate the improvements to their fonts made possible by automatic hinting. All users will benefit from the improved overview, extra features, bug fixes, and improved interface.

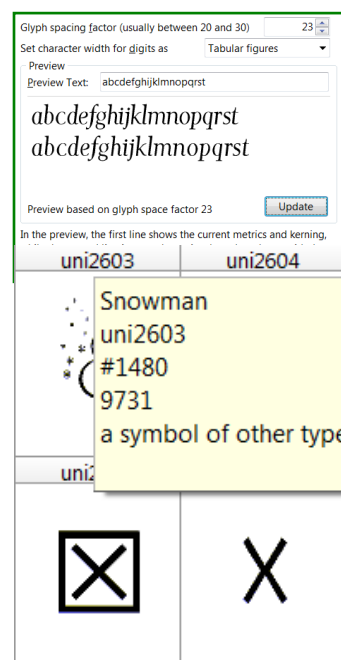
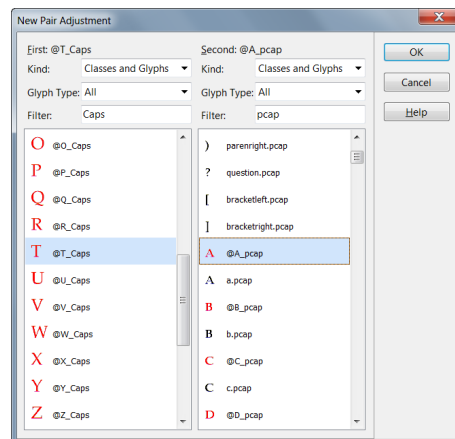
Free help is available on the [support forum](#). Please take the time to study the interface changes before asking, "Where is the Kern Dialogue?" Also check for Updates from the Help menu before reporting problems. Minor fixes and improvements may be made after the initial release.

The [Help File](#) is available online, so anyone can see what features are available before downloading the free trial version. The trial version is the full Professional Edition, but it doesn't save fonts.

Existing users may like to see which feature requests have been [implemented in more recent versions](#).

## New in the Latest Version (9.1 in Bold)

- Visual OpenType Designer reduces the need for coding and provides visual feedback on the effect of applying features for GPOS or GSUB. A code editor is available for those who prefer to edit code. Shortcut Ctrl F8 to edit lookups in Code Editor.
- The OpenType Feature Layout editor was merged with the OpenType Designer.
- All OpenType features and lookups are now supported.
- **Import of VOLT 1.4 projects.**
- Kerning Wizard with option to ignore lowercase/Uppercase pairs and small values..
- Apply changes without closing OpenType Designer.
- Preview and locate OpenType Features in the OpenType Designer.
- Quick Find Adjustment Pairs, Mark to Base, and Lookups.
- Selected Adjustment Pair preselected on adding a new pair.
- Filter glyphs or classes by type, or part of a name.
- Add Adjustment Pair dialogue remembers its settings.
- Ins/Del shortcuts to Add/Remove lookups.
- Trim Pairs below a chosen value.
- Access keys and tabbing order improved.
- All kerning pairs exported.
- Kerning Wizard: omit lowercase/Uppercase pairs and small values.
- Classes sorted automatically or manually in the Class Manager.
- A single toolbar icon opens both fonts or projects.
- Overview Panel categories extended to include all glyphs, and to add: – Other Letters, Currency Signs, Punctuation, Marks, Symbols, Separators, and Others.
- Copy Adobe vector data to clipboard when copying contours or single glyph.
- Samples toolbar includes many symbols and dingbats.
- Background Image toolbar option for convert to contours. **Default colour changed to yellow.**
- Context menu to automatically assign glyph types.
- Find single glyph in Insert Character dialogue.
- Preview Toolbar now supports unmapped glyphs. Type "/glyphname" to show them.
- Preview and Comparison Toolbars display OpenType features.
- Scale Transformation also scales side-bearings.
- Bold Transformation can set font subfamily and design to bold.
- Ruler guides sorted on opening Guideline Options dialogue.
- New shortcuts: b = bucket; c = colour; k = knife; m = measure; p = point/contour mode.
- Knife tool and rotation of contours constrained to increments of 15° by holding the shift key.
- Preview Optical Metrics before generating.
- Smooth contours around on-curve points on context menu in glyph edit window.
- Skew contours constrained by increments of 1° by holding the shift key.
- Skew on Transform Toolbar displayed in degrees instead of as a tangent.
- Knife tool and rotation of contours constrained by increments of 15° by holding the shift key.
- **Autohinter binary updated to ver 1.5.** Get the [latest version from Sourceforge](#)
- Decolorize item added to context menu.
- Overview Tooltips enhanced with a description of the glyph type.
- Embedding rights, Vendor ID, and Vendor added to personalizing options.
- Custom Naming added to Font Properties.
- **Export All open Font Projects at once as both \*.otf or \*.ttf and \*.woff**
- **Open in FontCreator from Windows Explorer for \*.fcp, \*.otf, \*.ttf, and \*.woff**
- **Paste single glyph to multiple selected glyphs as duplicate copies.**
- Open multiple copies of the same font project — save the right version!



## Fixed Bugs

- Calculate additional metrics on Font Properties dialogue.
- Find now works again in the Glyph Edit Window.
- Ctrl R now works again for Repeat Last Action
- **Some bugs were fixed with OpenType Features.**

## Importing VOLT Projects

If a font contains data from a VOLT project, FontCreator will offer to convert it to a FontCreator Project. I have no experience with VOLT (Microsoft's Visual OpenType Layout Tool), but those who do may find this feature very useful for working with projects developed with it.

If FontCreator is unable to process the VOLT project data, the binary GSUB and GPOS tables will be used instead. In FontCreator Professional, the OpenType Designer and OpenType Layout Feature Editor can also import Microsoft VOLT project (\*.vtp) files.

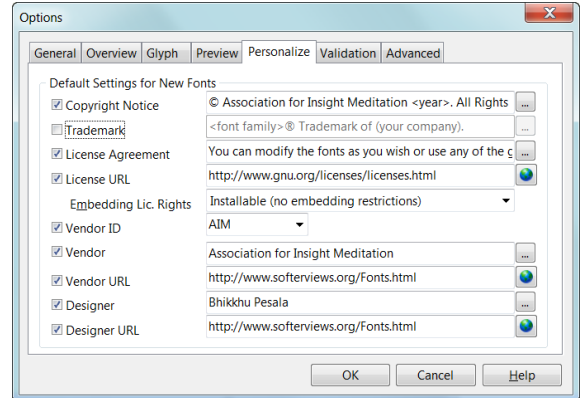
There is a new option on the Advanced Options dialogue, which is enabled by default, to warn if VOLT data is detected on opening a font.

## New Program Options

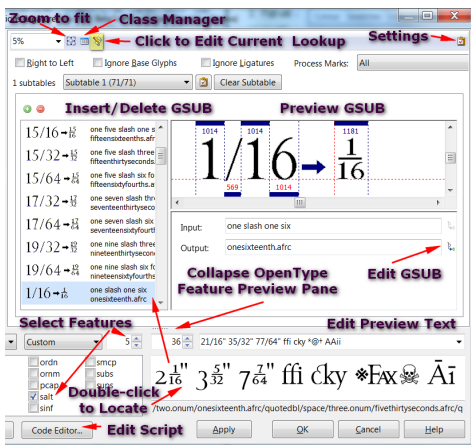
Preview text strings can be added and modified in the Program Options dialogue, instead of having to edit files in the %AppData% folder. The Personalize tab (formerly the Naming tab) of the Options dialogue adds fields for Embedding Licensing Rights, Vendor ID, and Vendor where defaults can be set for creating new font projects.

## Font Properties

Font Smoothing was moved from the Font menu to a new tab on the Font Properties dialogue. The Metrics Calculate button now defaults to Maximum instead of Default to prevent clipping of any glyphs, which may happen if any contours exceed the WinAscent and WinDescent boundaries. The Custom Tab replaces the Naming dialogue from earlier versions of FontCreator. Use this to add custom naming fields for Regular, Italic, Bold, and Bolt Italic styles in languages other than English.

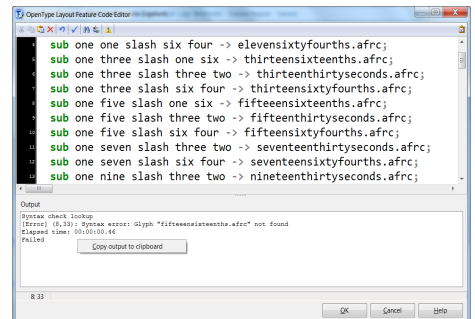


## Visual OpenType Designer



The previous OpenType Layout Feature Editor has been merged with OpenType Designer. The code editor is still available for those who need it, but a visual representation of OpenType features and lookups aims to make the editing process more intuitive for those not familiar with editing code.

On opening the OpenType Designer for a font with OpenType features, one will see a window with the scripts, features, and lookups on the left. One can also import scripts to add OpenType features. Selecting a Glyph Substitution feature like AlternativeFractions (afrc)



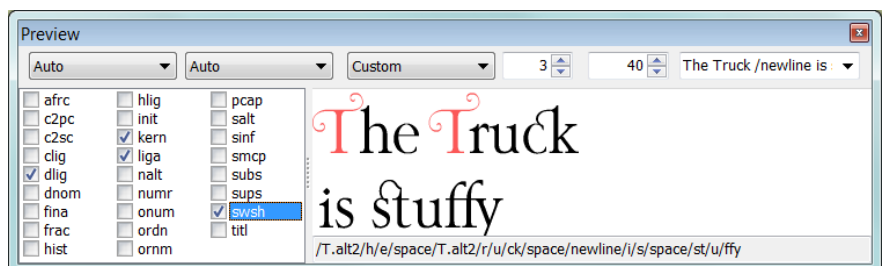
as in the screen shot will display visually the input and output for each substitution in the lookup in the pane on the right.

The input for the selected lookup is "one slash one six," and the output is the glyph named "eleventhirtyseconds.afrc." That is, if the user types 1/16 in an OpenType aware application and if the Alternative Fraction feature is enabled, the stacking fraction in the right-hand preview pane will be the result. The text is still 1/16, but the OpenType feature replaces it with the alternative fraction glyph. If the feature is disabled, or the font is changed to one without that feature, then the text will be shown as 1/16.

The Code Tab is displaying the lookup table for Alternative Fractions. The code has been compiled, and the message box below the code reports that it compiled successfully.

## Preview OpenType Features

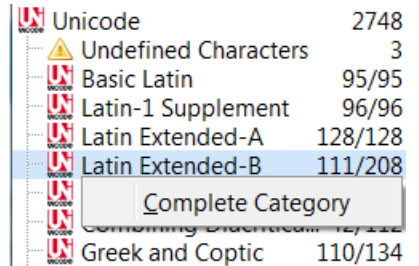
The Preview Toolbar supports kerning using OpenType GPOS. It also displays other OpenType features. Select any features from the panel on the left, or select Stylistic sets from the spin wheel control. The side panel can be resized or hidden. Enter "/newline" to start a new line of text.



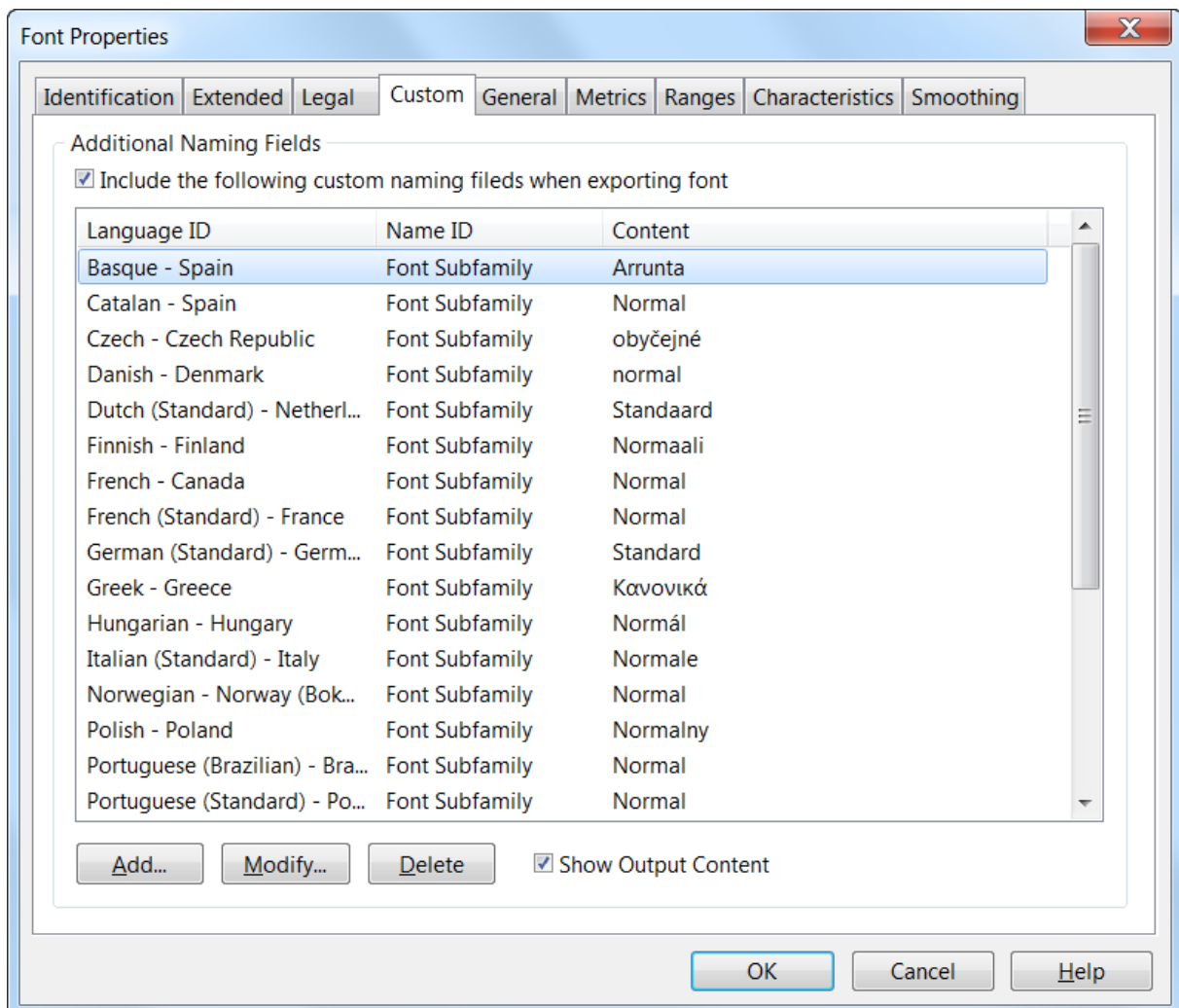
The Comparison Toolbar in the Glyph Edit Window will also use OpenType features and kerning if Kerning or Default features are enabled.

## Other Improvements

- The workflow for exporting fonts was improved. It is no longer essential to set the Export Settings first to export a font. If no path and filename have been set, using the Export As TrueType (or Web Font) options will let you browse to any folder after setting the options, then the Export Settings for the project will be updated. If you don't wish to update the Export Settings, then don't save the project file again after using Export As... This also means that you can export a font that is currently installed — just export it to a different folder or filename.
- Easier editing of data files. There are several files used by FontCreator that can be edited by the user. Two new buttons in Tools, Options, will first copy these data files to the User Data Folder, then open that folder in Windows Explorer, ready to edit the files. (See the tutorial on [Data Files](#)).
- The glyph overview panel shows the number of glyphs in each Unicode character set and the total number. Right-click on any character set and select "Complete Category" to add the missing characters. You will then need to add suitable outlines. (Some of my fonts have characters in the Private Use Area that are listed as Undefined Characters, i.e. they are not yet defined in the data files used by FontCreator).
- A toolbar icon and shortcut were added for opening project files.
- A Custom Naming tab was added to the Font Properties dialogue for naming font properties for different languages. This restores an advanced naming feature that was available in FontCreator 6.5, but was not implemented in FontCreator 7.



Unicode	2748
Undefined Characters	3
Basic Latin	95/95
Latin-1 Supplement	96/96
Latin Extended-A	128/128
Latin Extended-B	111/208
Combining Diacriticals	12/12
Greek and Coptic	110/134



## Conclusions

FontCreator now supports all OpenType features including those required for complex scripts such as cursive positioning. It adds some significant improvements for greater efficiency when working with kerning classes and OpenType scripts. Import of VOLT project files is supported too.

Those new to creating fonts may struggle to get to grips with the many options at first. Font Editing has a long learning curve, but it's really not too hard to create OpenType fonts with FontCreator. Creating ordinary TrueType fonts without complex scripts and features is easier than it ever was, and if you need OpenType features FontCreator makes it easier than it is with other scripting tools.