

Version 8.0

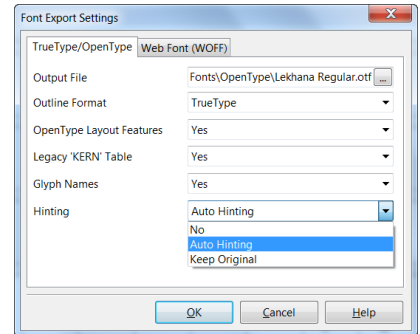
Released 5th June 2014 • Updated 21st July 2014

[Download Page](#) • [Version Comparison Chart](#)

Web Designers can now create their own fonts since FontCreator supports the Web Open Font Format (WOFF) • [Test Page](#) (View in Firefox) Export of CFF (Postscript) outlines is also supported now.

The Kerning dialogue has been replaced with the "OpenType Designer" to support the use of glyph positioning data for kerning. If a font with only the old style KERN data is opened in FontCreator, it is converted to GPOS data, which can be edited in the new dialogue. The OpenType Designer (on the Font menu) opens a dialogue for modifying kerning adjustment pairs, as well as other OpenType GPOS features. This change required a change to the Project file format. Projects edited in the latest version may lose data if opened in the previous version. Copy your project files to a new folder, and edit the copies while learning the new version. Then, if you should encounter problems, you can revert to the previous version by opening your previous project files.

On exporting a project for the first time you will need to select the options in the Font Export Settings. Browse to choose a path for the font, enter the filename, choose the Outline format from TrueType or CFF (Postscript), select the kerning tables to include, and select from the Hinting options.



To export a Web Font, select the options for that. When ready to export the font, select the export type from the File menu or use the shortcuts Shift+Ctrl+E (TTF/OTF), Shift+Ctrl+R (CFF), Shift+Ctrl+W (WOFF), or Shift+Ctrl+A for All.

To check or change the export settings before exporting, use the Export As menu options. The appropriate dialogue tab will open where the settings can be changed before continuing the export. Any changes to the export settings made on exporting via this route will become the new defaults for the current project. Don't save the project again at this point if you don't wish to update the export settings.

To include OpenType features, select Default or Custom Script. See the section below or [online help](#) for writing custom scripts for [OpenType Features](#).

Improvements to Kerning

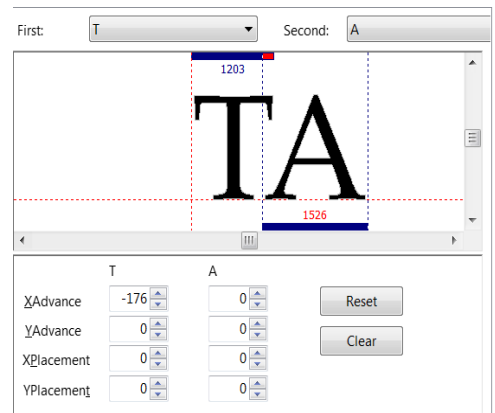
Kerning large fonts is a tedious task as they may need thousands of kerning pairs. Kerning groups — new in FontCreator 8.0 — greatly reduce the workload for adding and editing kerning values.

For example, if one adds a group for variants of Capital T and another for variants of Capital A, one only needs to create a single pair adjustment value. Scroll through the pairs to check that the kerning distance is right by selecting the drop lists for the First and Second pairs, then use the cursor keys.

When creating groups, consider the shape of the glyph outlines to decide whether they belong in that group. For example, lowercase ä or ã may need a different adjustment with Capital T than lowercase a or á, in which case you may need two different groups for accented forms of lowercase a — those with accents below or narrow accents above, and those with wide accents above.

FontCreator can automatically build groups if a font contains kerning pairs, or groups in one font can be exported as an OpenType layout definition file (a plain text file with the extension *.otlfd), then imported into another style of the same font, or another font.

Using Autokern to modify the adjustment pairs to suit the Bold, Italic, or other styles is a simple task after the script has been imported.

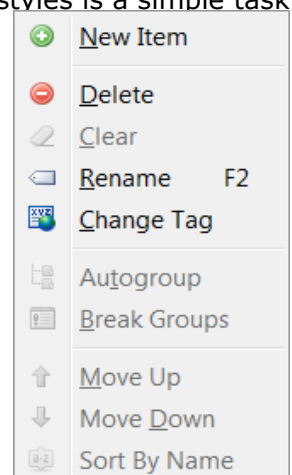


Kerning Groups

The Group Manager makes it easy to add glyphs to the group later by hiding all glyphs already in the group, and removing a glyph is as easy as pressing the delete button. It pays to give some careful thought to how many groups will be needed, and which glyphs can share the same group. Will a glyph only ever be used as the second of a pair, or might it occur in either position? Will accents clash with ascenders or descenders?

Autogroup on the context menu will generate groups if you don't wish to do it manually. Glyphs will be grouped based on the kerning pair values.

Having added the groups, right-click on the lookup table for pair adjustments in the dialogue, and select Autokern (or use the toolbar button), to have FontCreator calculate appropriate values based on the white space between pairs.



Trim... can be used to remove any values that are too low to be useful.

The selected lookup can be exported as a text file. Type the filename, and let FontCreator add the *.otlfd extension (OpenType Layout Feature Definition) for you. Associate these files with a text editor like Notepad if you want to edit them externally.

Autokern Settings**

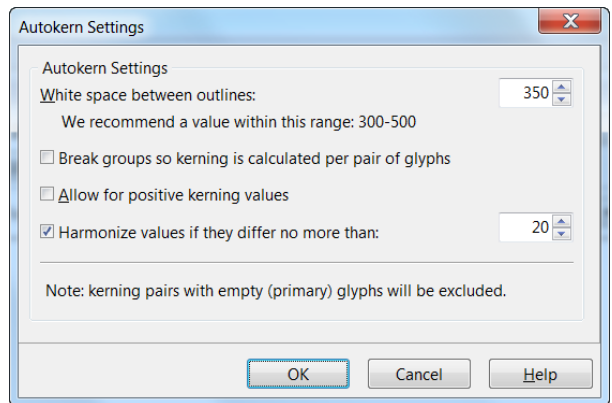
The Auto Kern Settings dialogue allows the white space between characters to be adjusted to give tighter or looser kerning.

Positive values may be appropriate for some fonts, e.g. to avoid a class between Th, or fh when they occur together. In my fonts, I use glyph substitutions to replace these problematic pairs, but others may prefer to use positive kerning.

The process is almost instant, even for a large font with many adjustment pairs.

However, do check for rogue pairs like C-, which are absurd, and either manually correct them, or delete the adjustment pair to avoid them getting overlooked.

Harmonize values will adjust the calculated values within the specified range so that they can be used to create larger groups when the autogroup feature is used.



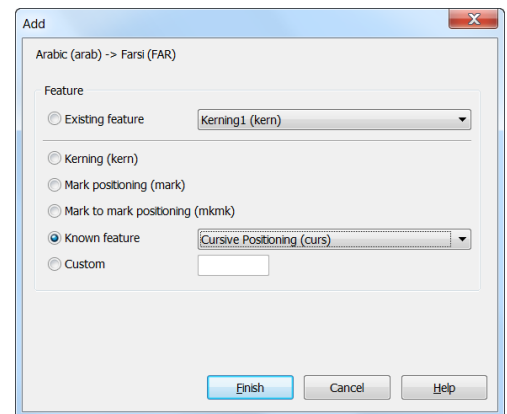
Complex Script Features

Users who are already familiar with Microsoft's Visual OpenType Layout Tool (VOLT) should have little difficulty adding scripts and lookups for other features such as cursive positioning. New users will need a lot more help, but the dialogues make this complex task easier by offering sensible defaults and a drop list of standard features.

Unlike the legacy kern tables, OpenType kerning tables can be language specific. On the Preview Toolbar, as well as a Checkbox to enable kerning, you will now find another checkbox for RTL (Right to Left scripts) and two drop lists for Script and Language.

Some fonts (e.g. Gentium) use the same kerning tables for all supported languages, while others (Linotype Palatino) have two or more different kerning tables for different scripts or languages.

The Latin (latn) script (A B C) is used not only by Italians, but is common to many European languages, while Cyrillic script (A Б B) is used in Russia, Bulgaria, Bosnia, Kazakhstan, Tajikistan, Ukraine, etc. The appropriate kerning table will be used in the Preview and Comparison Toolbars when the Script and Language are selected from the drop lists.



Anchor Manager

Anchors can be used to position diacritical marks relative to base glyphs using the mark positioning (mark), or relative to other diacritical marks using the mark to mark positioning (mkmk). The anchors are hidden and locked by default. Unlock them to change their position. Anchors can be added after creating a feature that uses them in the OpenType Designer. Enable the Anchors palette from the Toolbar Context menu, or from View, Toolbars. Select an anchor to edit its co-ordinates, or disable Lock Anchors on the Grid toolbar, zoom in, and drag it to the new position.

Open the Anchor Manager to see a full list of defined anchors, or to rename them.

In the OpenType Designer, select a feature that uses anchors, such as mark to base, or mark to mark to preview the results with different first and second glyphs as in the screen shot below.

Creating Indic, Hebrew, or Arabic fonts is beyond my experience so I won't go into any more detail. Please ask on the High-Logic support forum or read the PDF manual or Tutorial threads to learn more.

